

## Job Description Check List:

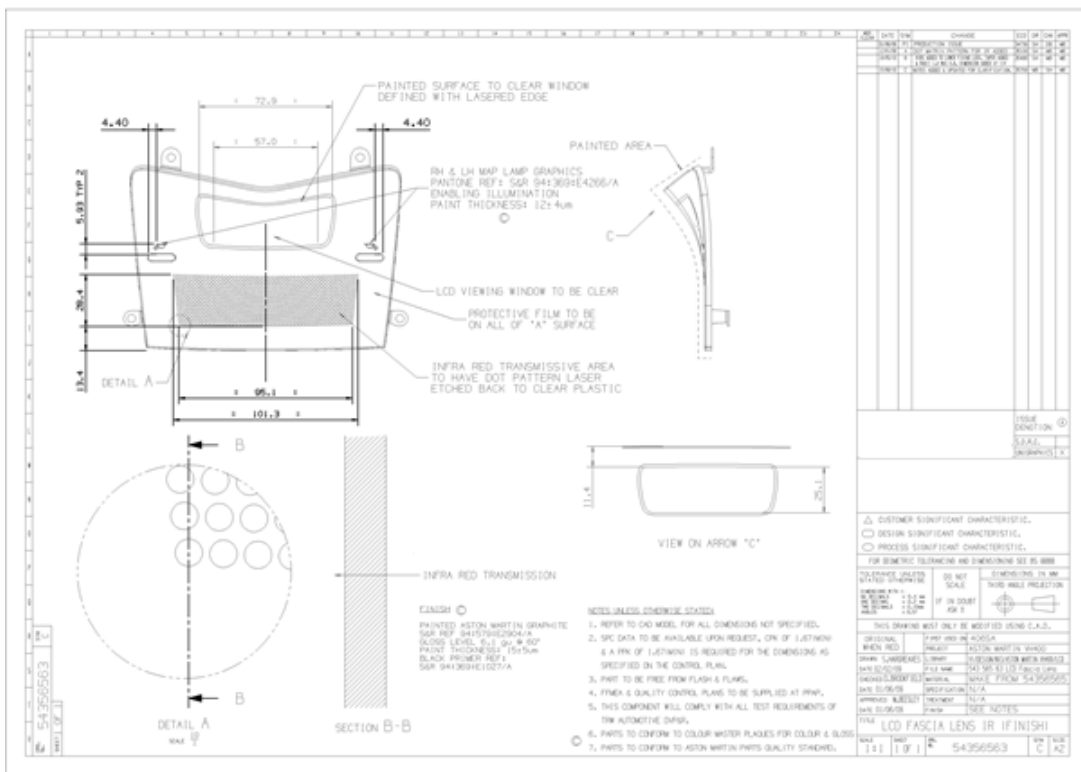
### 1. Service and Job Description

Please [email](#) us your artwork including the following:

#### 1.1. Technical drawing showing required process

An engineering drawing allows Fimark to start evaluating the type and nature of the work required and to get back to you with a solution.

Below is an example of a drawing, which shows all the information required for painting and laser etching.



#### 1.2. Laser surface texturing

For laser surface texturing in 5 axis, we need the CAD of the component. It is possible to scan and reverse engineer components to create the CAD.

Textures can be scanned, created from scratch or sent to us as CAD or grayscale bitmaps.

### 1.3. Material type, item description and picture

The material type is important information for FIMARK to know to be able to evaluate which process to be used. A photograph is always useful.

### 1.4. Amount of items to process

We need to know the amount of items to be processed to be able to work out a price.

### 1.5. Contact details

Do not forget to include your contact details:

- Company name
- Contact name
- Contact email address
- Contact phone number

### 1.6 Expected turnaround

Most work is turned around in 12 working days, but let us know if you need a faster service. We look forward to receiving your email and we will get back to you with a price. If you have any questions please get in touch.